



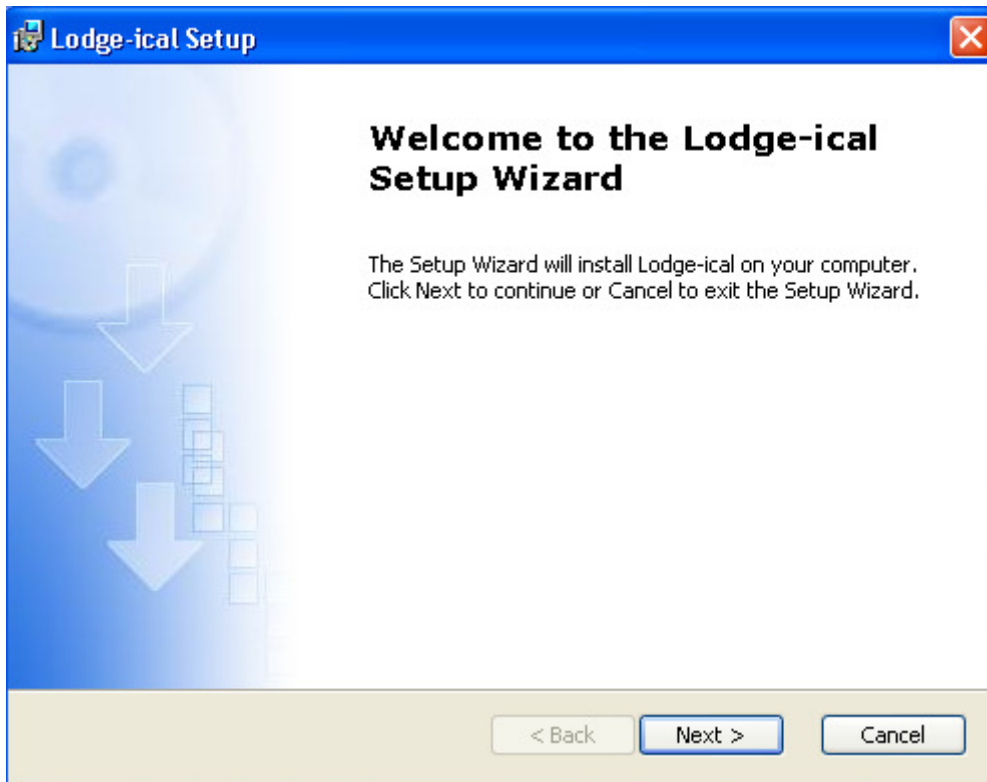
Lodge-ical™ Version 7 Installation Instructions

This document describes the Lodge-ical™ installation process.

****NOTE** Please store this CD in a safe place. You will need this CD if you purchase a new computer or if you need to remove Lodge-ical from your computer. There will be a charge if you have to request a replacement installation CD.**

Please follow the instructions below:

Step 1 – Insert the CD and the installation process should self-start and display this form*:



*If the installation does not self-start, then use My Computer to view the contents of the CD and double-click on the file named setup.exe

Step 2 – Press Next to display the End-User License Agreement:

Lodge-ical License Agreement

End-User License Agreement
Please read the following license agreement carefully

WILLIAMSON ENTERPRISES, INC. LICENSE AGREEMENT
Lodge-ical

WILLIAMSON ENTERPRISES, INC. IS WILLING TO LICENSE THE SOFTWARE TO YOU AS AN INDIVIDUAL, THE COMPANY, OR THE LEGAL ENTITY THAT WILL BE UTILIZING THE SOFTWARE (REFERENCED BELOW AS "YOU OR YOUR") ONLY ON THE CONDITION THAT YOU ACCEPT ALL OF THE TERMS OF THIS LICENSE AGREEMENT. READ THE TERMS AND CONDITIONS OF THIS LICENSE AGREEMENT CAREFULLY.

I accept the terms in the License Agreement
 I do not accept the terms in the License Agreement

< Back Next > Cancel

To accept the agreement select "I accept the terms in the License Agreement"

Step 3 – Press Next to enter your customer information

Lodge-ical Setup

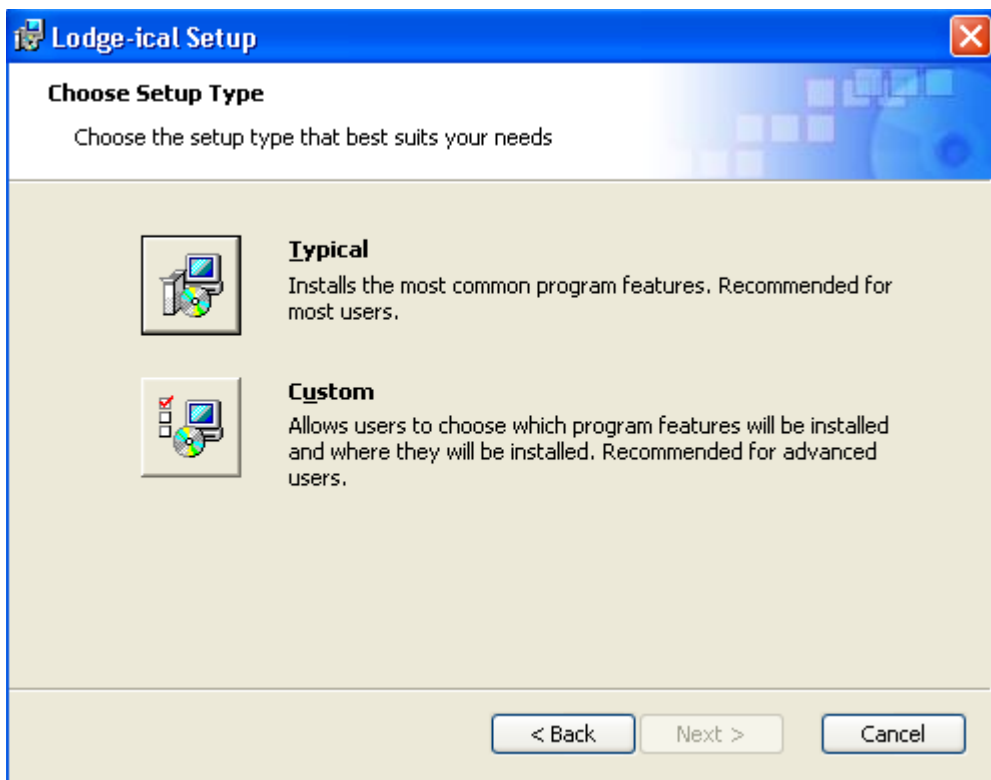
Customer Information
Please enter your customer information

User Name:
Williamson

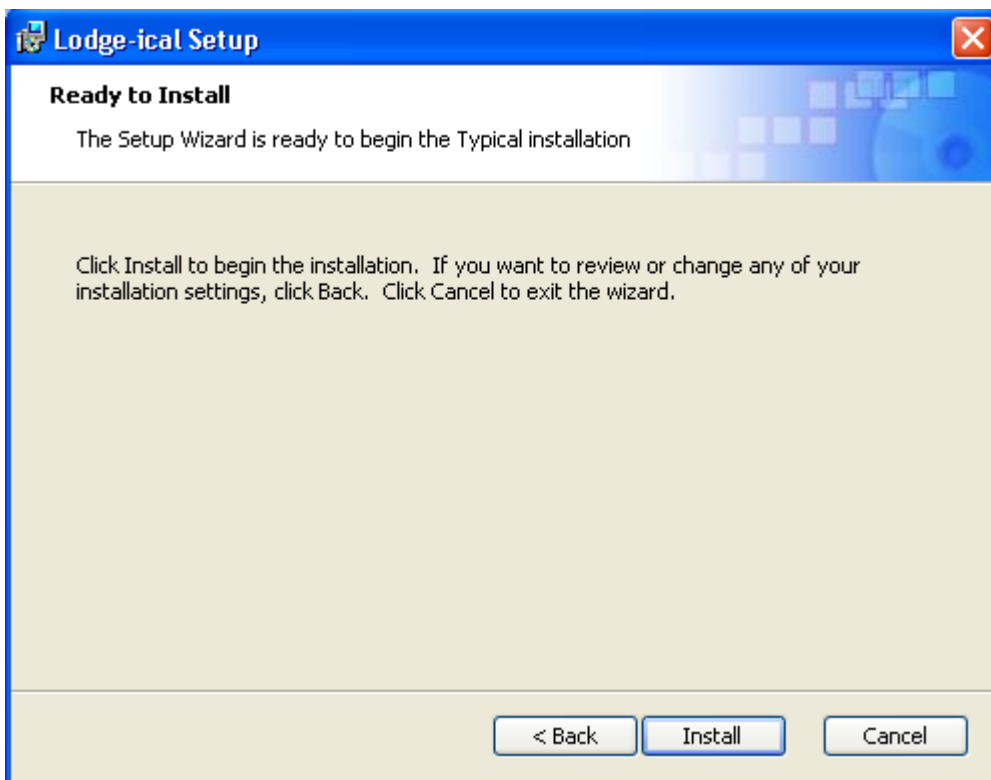
Organization:

< Back Next > Cancel

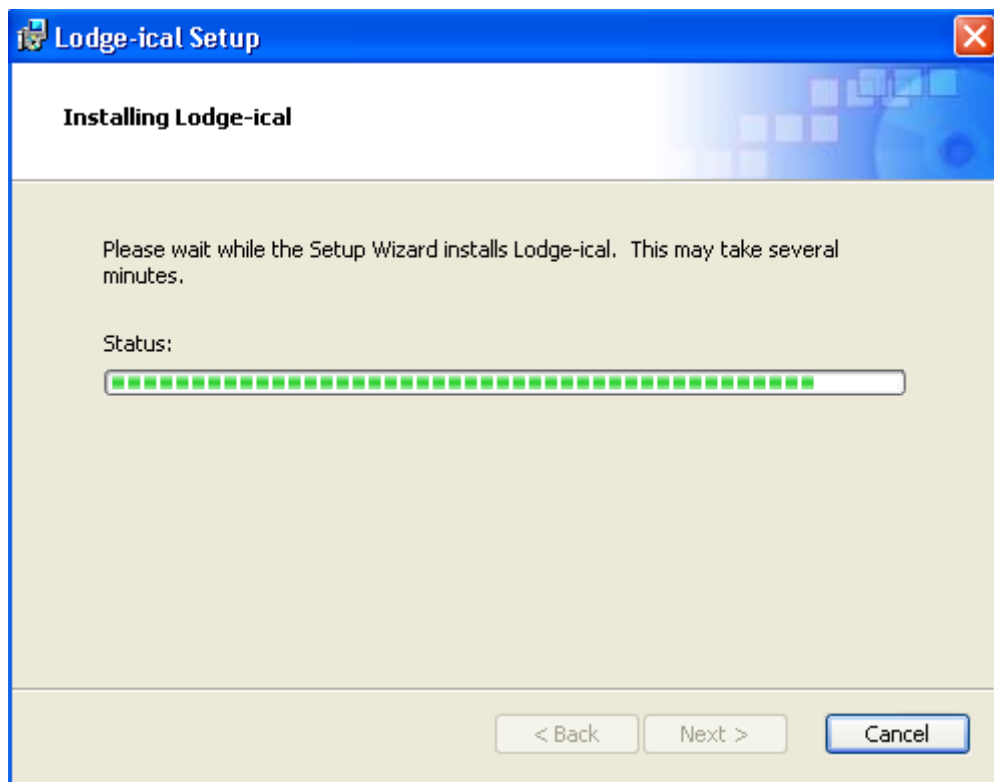
Step 4 – Press Next and then press the Typical button to begin the installation.



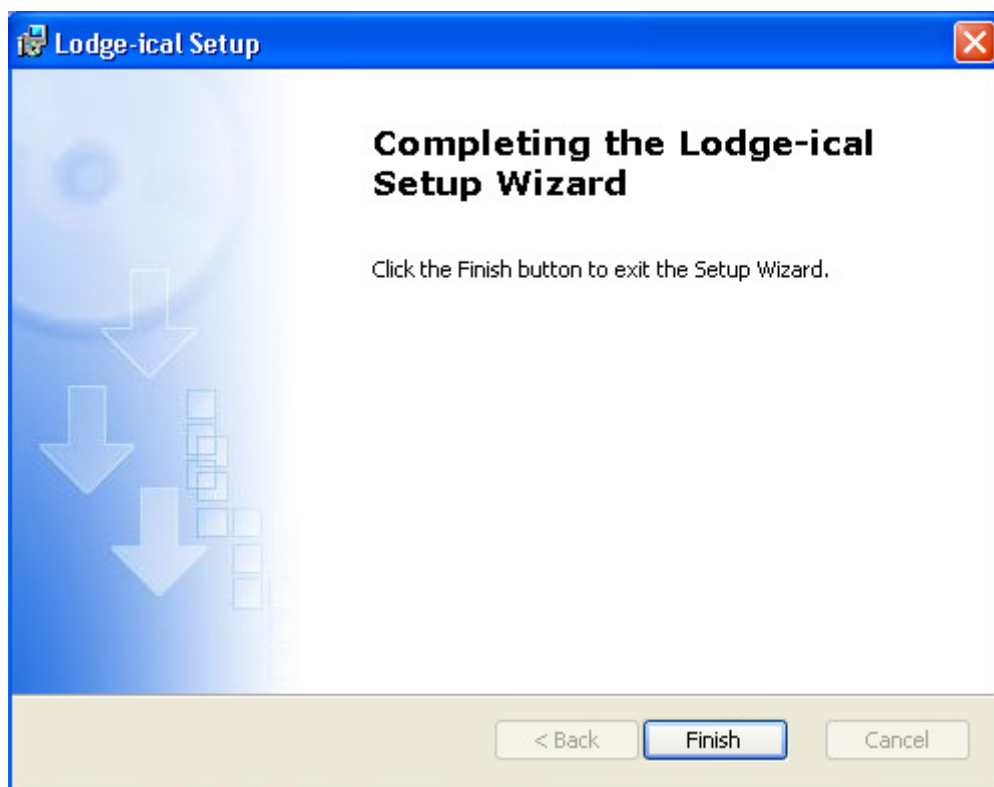
Step 5 – Press Next then press the Install button



Step 6 – The installation officially begins here



Step 7 – Lodge-ical™ will prompt you for a successful installation

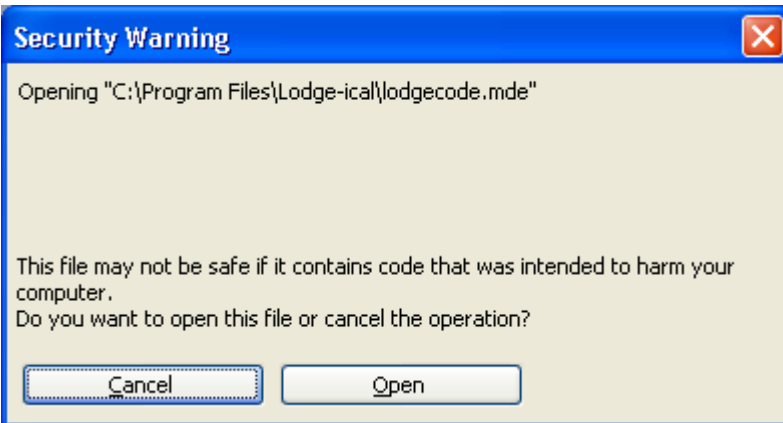


Step 8 – Press Finish. Now you are ready to open up Lodge-ical™. Double-click the Lodge-ical™ icon on your desktop (designated by a purple key). You might see the following:



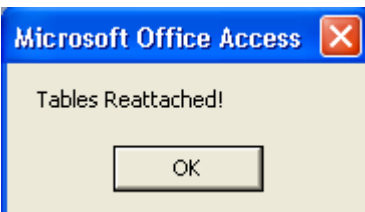
Click Yes
You will be prompted to exit and re-enter Lodge-ical

Step 9 – When you reopen Lodge-ical you will now see:



Press the Open button to proceed

Step 10 – Lodge-ical™ will attach the data to the code and issue a message:



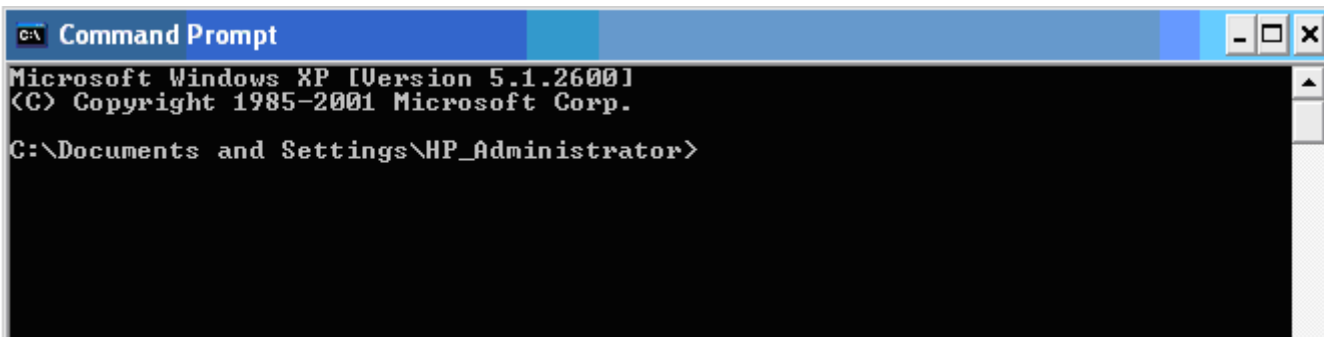
Press OK.

Step 11 – Install an external control

Lodge-ical version 7.0 includes two graphical calendars (see your documentation for more information) which will make it much easier to view your room calendar and your scheduled employees. To use these calendars, you must register a file into your Windows registry. Please follow the instructions below:

- a. Exit Lodge-ical
- b. Click **Start**, click **Programs**, click **Accessories**, click **Command Prompt** (if you are using Windows Vista, please follow this instruction instead: Click **Start**, click **Programs**, click **Accessories**, right click **Command Prompt** and select **Run As Administrator**)

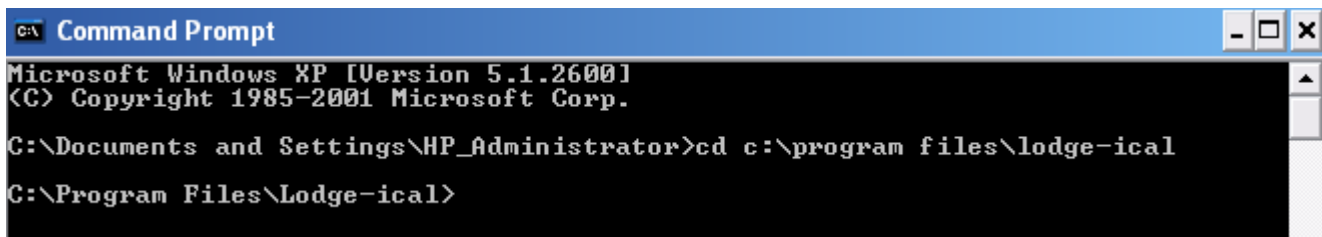
You will now be brought to a command prompt that looks like this:



```
C:\ Command Prompt
Microsoft Windows XP [Version 5.1.2600]
(C) Copyright 1985-2001 Microsoft Corp.
C:\Documents and Settings\HP_Administrator>
```

- c. type **cd c:\Program Files\Lodge-ical** and then press **Enter** (if you are using Windows Vista Home 64-bit version, please follow this instruction instead: . type **cd c:\Program Files (x86)\Lodge-ical** and then press **Enter**)

Your window will now look like this:



```
C:\ Command Prompt
Microsoft Windows XP [Version 5.1.2600]
(C) Copyright 1985-2001 Microsoft Corp.
C:\Documents and Settings\HP_Administrator>cd c:\program files\lodge-ical
C:\Program Files\Lodge-ical>
```

- d. At the C:\ Program Files\Lodge-ical prompt, type **regsvr32.exe ctschedule.ocx** and press **Enter**
- e. You should receive a message that the control was successfully installed
- f. At the prompt type **exit** and press **Enter**
- g. Now you are ready to go back into Lodge-ical and start to use the calendars

Step 12 – Exit all applications, reboot your computer and open up Lodge-ical

****NOTE** This installation includes steps that you may not be familiar with. If you have problems with any of these steps, please call Williamson Enterprises, Inc. at 406-333-4167 for further support.**